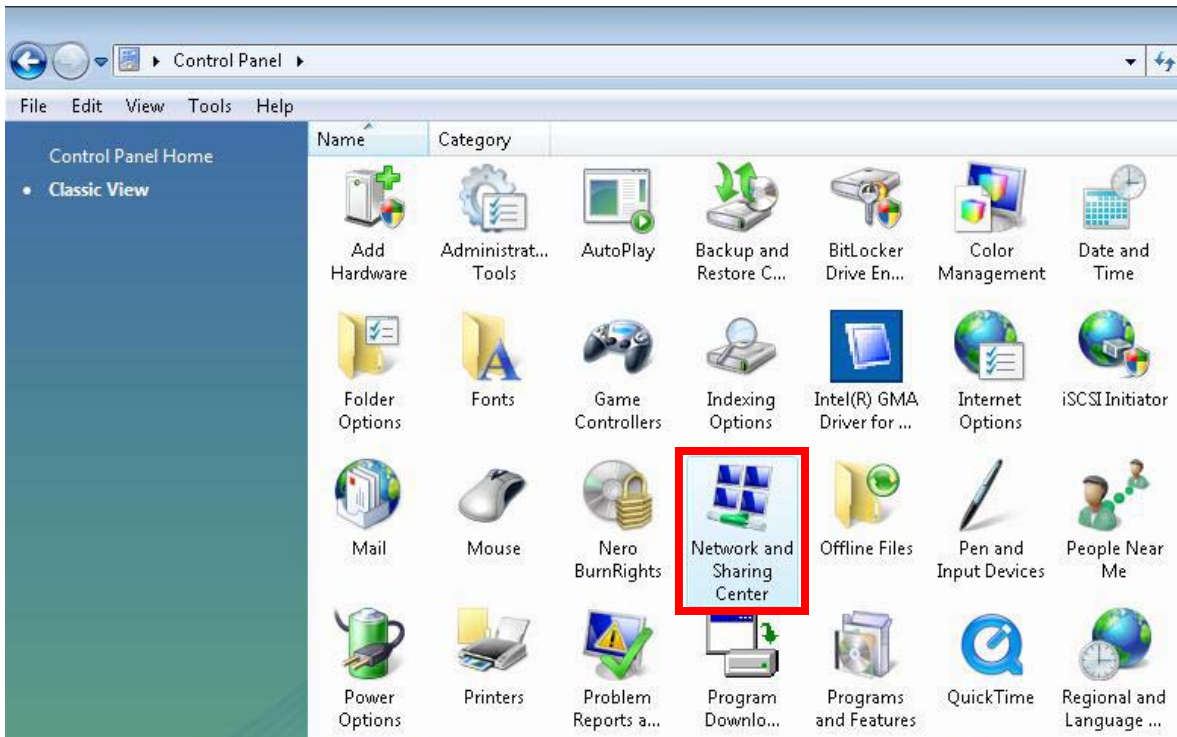


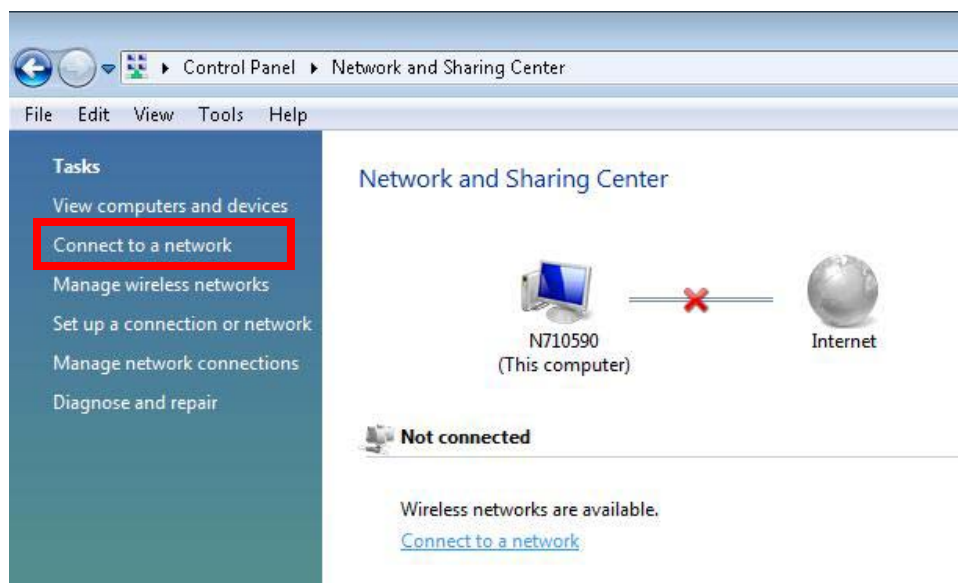
Connecting to Wireless Services as a Student

This method of accessing the wireless network can only be used by current JCC students on the JCC Campus in William Atkinson Hall, James McDivitt Hall, and Campus View.

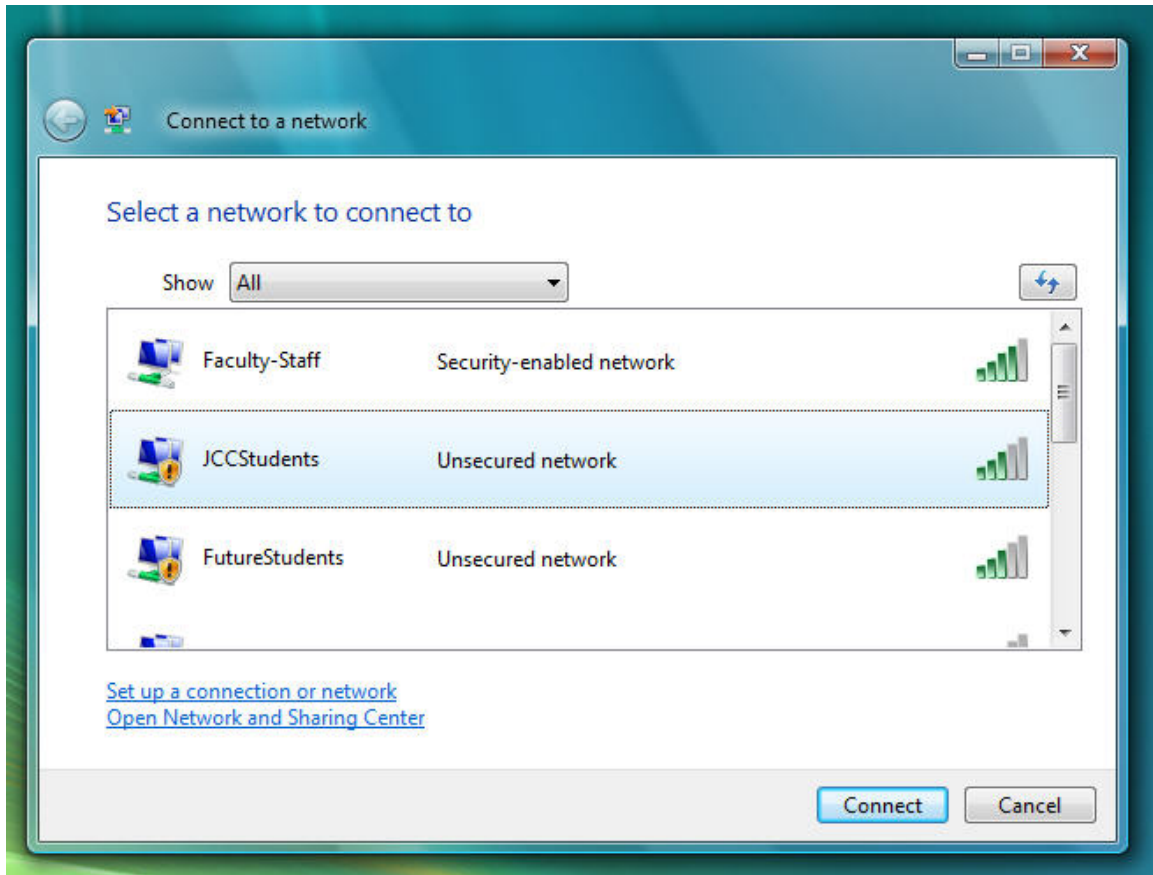
1. Go to Start > Control Panel. Select Classic View.
2. Double-click Network and Sharing Center.



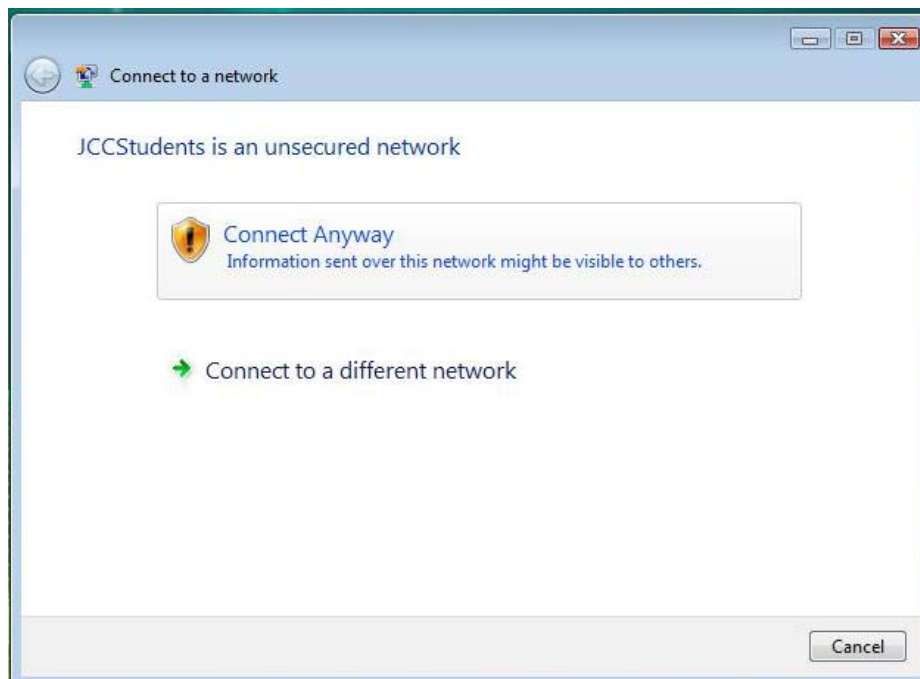
3. On the Tasks panel, click on the “Connect to a network” link.



4. Select JCCStudents and then click Connect.



5. A warning will be displayed, asking if you want to connect to the unsecured network. Select Connect Anyway.



6. When the computer connects to the JCCStudents wireless network, it will display a message verifying that it has successfully connected to that network. Click on the “Close” button to exit this message.
7. Next, launch your preferred Internet browser. Your browser should display a security warning asking your confirmation to proceed (*this message may vary in accordance to your Internet browser*). Select your browser’s option to proceed.
8. Log in using your JCC username and password.

See instructions below login prompt for login information.

User Name:

Password:

User Name

Employee’s user name is 771

Student’s user name is 771

“771” is JCC’s shorthand for the first seven letters of your last name, the first seven letters of your first name, and your middle initial.

Password

Your default password is the first letter of first and last name, 2 digits of your day of birth, the last 2 digits of your birth year, and the last four digits of your student/employee I.D. number, all in lower case.

Other wise your password will be what ever you have set your Network Services password to be.

If you need assistance with your username or password, please contact the JCC Solution Center at (517) 796-8639.

9. A screen will appear. You can do one of the following. Redirect to the page you were originally trying to get to, logoff of your session, or view how much time you have left in your session. (*Note: Students can only be logged into the wireless network for four hours at a time. After four hours they will be disconnected*)