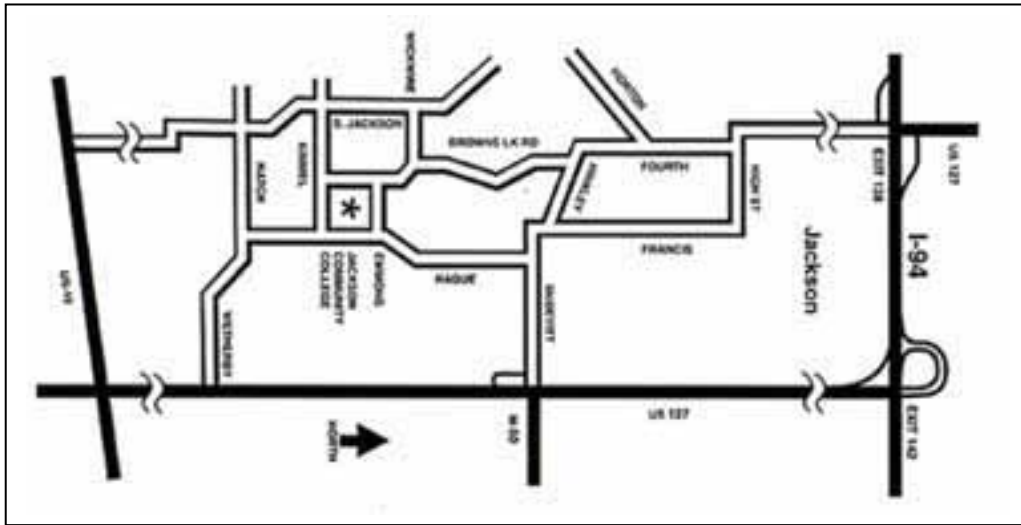


TECHNICAL INFORMATION PACKET

Harold Sheffer Music Hall
in the
George E. Potter Center
at
Jackson Community College





DIRECTIONS TO JACKSON COMMUNITY COLLEGE Potter Center

From I-94:

- Take Exit 142, US 127 South
- Go approximately six miles and take the Exit marked “50 Monroe”
- After the exit ramp, turn LEFT on McDevitt Road (heading West)
- Go approximately one mile to a traffic light and turn LEFT on Hague Road
- Go approximately two miles to Emmons Road and turn RIGHT
- Go to STOP SIGN and turn LEFT onto Browns Lake Road
- Go approximately 500 yards to Potter Center Parking entrance on LEFT
- Enter parking lot and continue along left side drive around to Loading Dock/Stage Entrance for Music Hall

Approximate driving time: 15 minutes from Interstate 94, Exit 142

BACKSTAGE PHONE: (517) 796-8638

POTTER CENTER MUSIC HALL

Jackson Community College
2111 Emmons Road
Jackson, Michigan 49201

Main Telephone: (517) 787-0800
Stage Door Phone: (517) 796-8638

Theatre Staff:

Cindy Allen
 Director and Group Sales Manager
 Phone: (517) 796-8612
 FAX: (517) 796-8642

House Crew:

Dennis Young
 Coordinator of Technical Services
 Phone: (517) 796-8412
 FAX: (517) 796-8428

Dressing Room A:

Phone: (517) 796-8661
 FAX: (517) 768-7054

Dressing Room B:

Phone: (517) 796-8662

Seating Capacity

Orchestra	1,045
Mezzanine	483

Total Capacity: 1,528

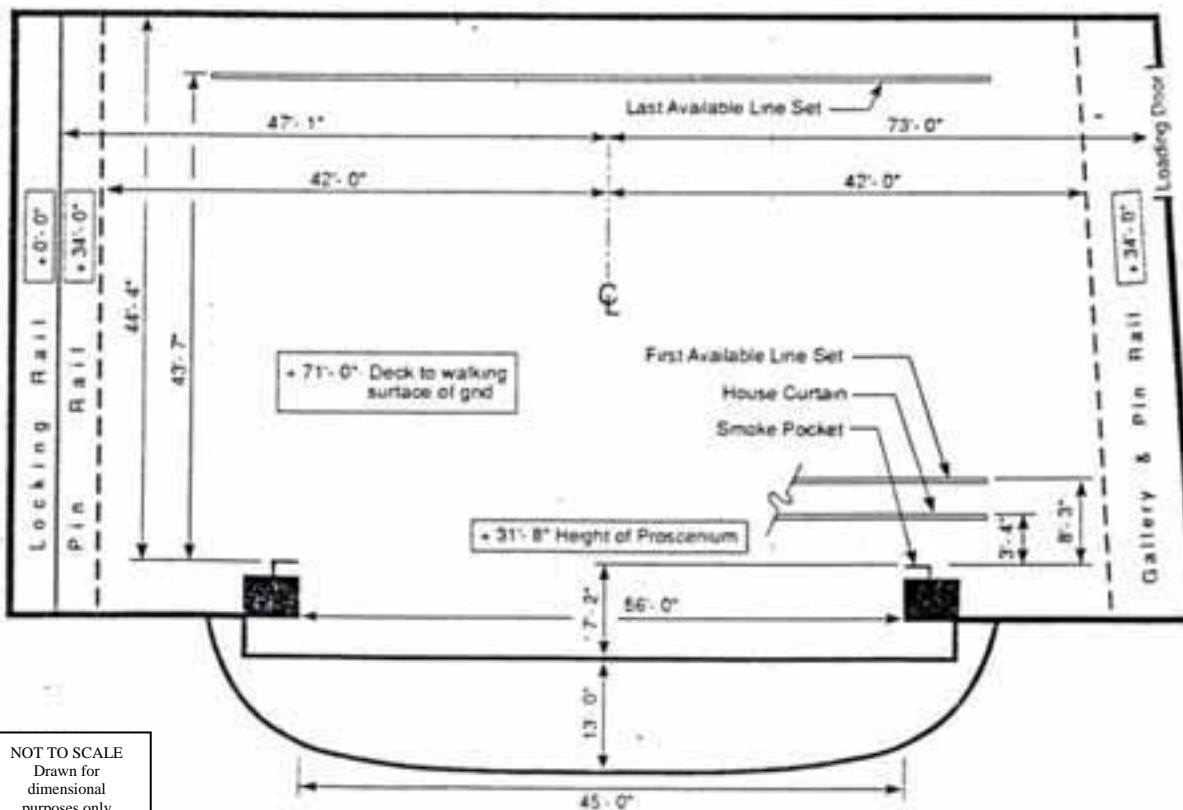
Box Office

Hard Ticket Box Office
 Box Office Manager
 (517) 796-8600

Outside Ticket Agency
 Select Ticketing

Dressing Room D:

Phone: (517) 796-8659
 FAX: (517) 768-7055



**George E. Potter Center
MUSIC HALL
Facts & Figures**

Seating

1,045	Orchestra level
483	Grand Tier
<hr/>	
1,528	Permanent fixed seats
+ 25	Wheelchair spaces
+ 37	Additional seating area on orchestra lift at audience level
<hr/>	
1,590	Maximum Seating Capacity

Stage

45' Deep X 100' Wide – 3' 6" above first row of seats

Floor – Resilient Wood

Proscenium:

56' Wide X 31' 8" High

45' X 20' Wing space stage right

45' X 60' Wing space stage left served with loading dock
and 12' X 12' doors from outside

Apron – 5' wide

Lift:

45' wide at back edge

24' wide at front edge

13' deep

4 preset stops: Orchestra Level, Audience Level, Stage Level, and
1'0" above stage level or any level in between

Two side light galleries at 38' above stage level

Calipers – each side of stage 30' long X 7' average width

Orchestra Pit

5' stage overhang

Pit dimensions:

18' deep X 55' maximum to 24' minimum width

7' clear height

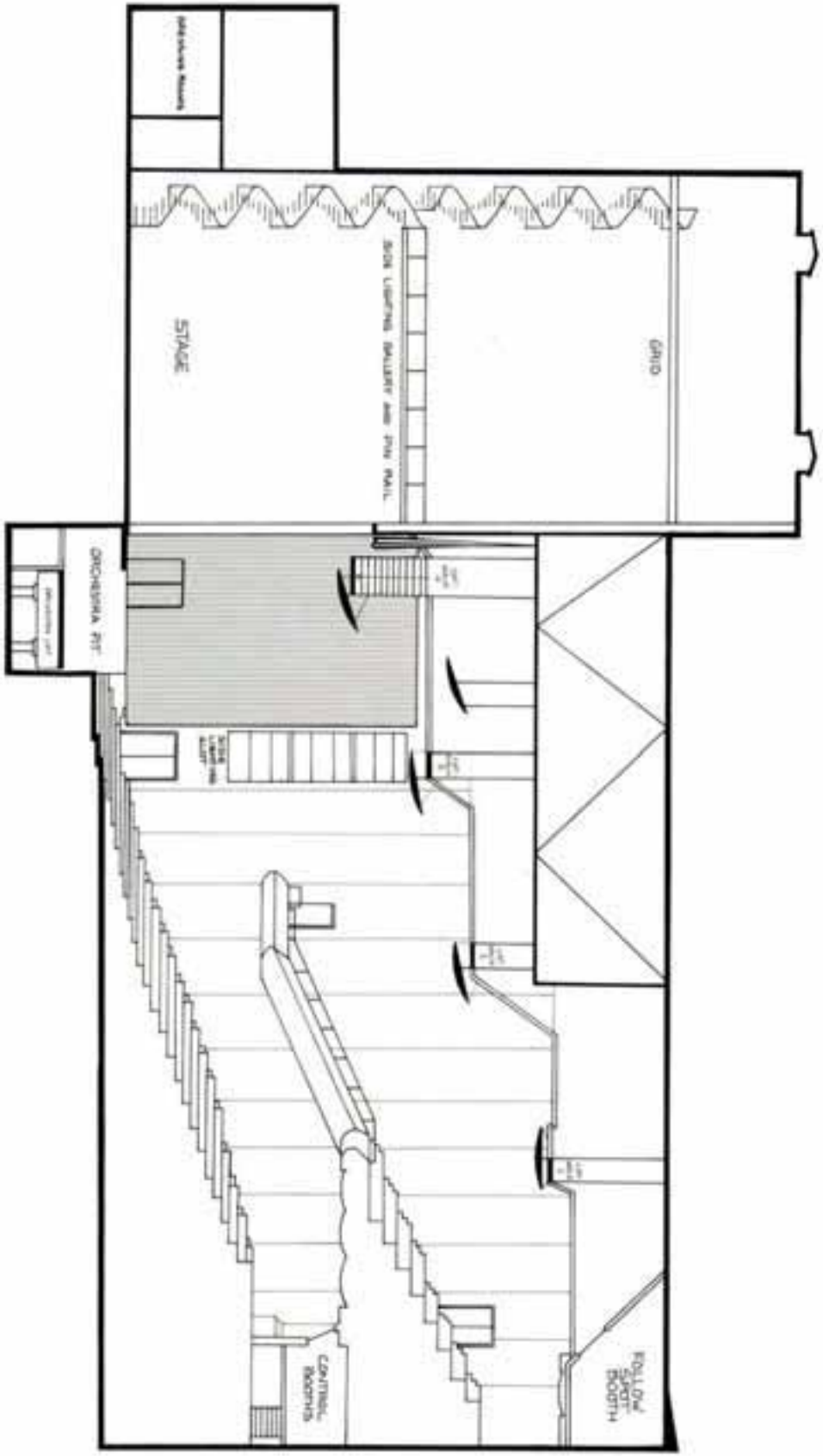
Orchestra pit can accommodate up to 80 musicians

Fly System

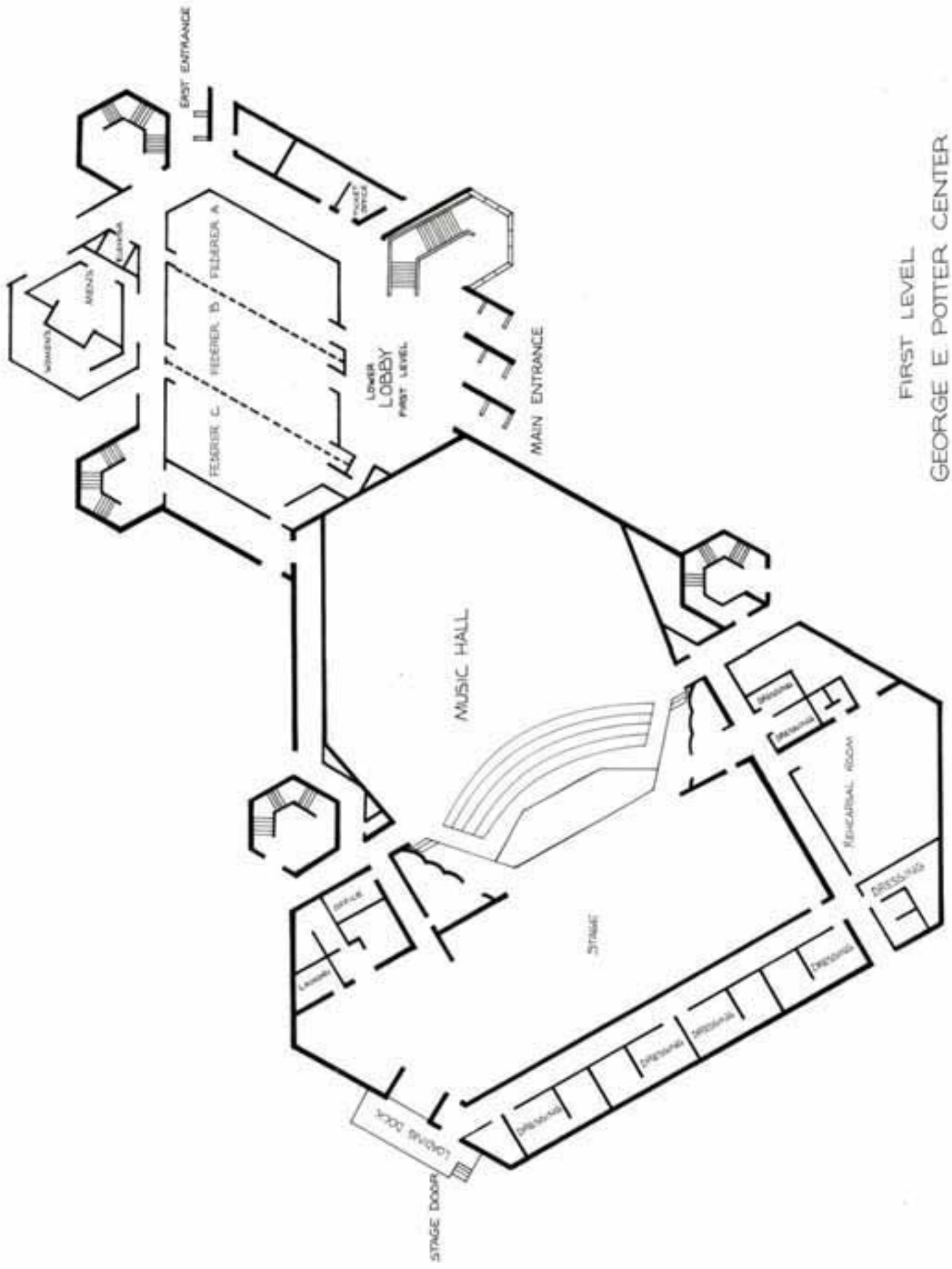
Full counterweight system with 75 lines on 7" centers. Typical batten length is 73' 6"

Hemp rope spot lines available.

Full grid 71' above stage floor. Access via spiral stair stage left.



MUSIC HALL - SECTIONAL VIEW
 GEORGE E. POTTER CENTER



FIRST LEVEL
GEORGE E. POTTER CENTER

Music Hall Lighting Inventory

POSITION	QUANTITY	DESCRIPTION	WATTS
FRONT OF HOUSE INSTRUMENTS:			
3rd Catwalk	32	ETC Source Four 10'	575
	16	ETC Source Four 19'	750
	5	Kliegl 10x16 ERS	1000
2nd Catwalk	6	ETC Source Four 10" w/ Iris	575
1st Catwalk	6	ETC Source Four 19' w/Iris	575
		ETC Source Four 26' (high side light)	575
SR & SL Ladder	6 (each side)	ETC Source Four 26' (high side light)	575
These lights are under hung from the 1st catwalk with 3 circuits of 2 lights each from each side			
SR & SL Box Boom	12 (each side)	ETC Source Four 19'	575
Each box has 4 circuits of 3 lights each			
INSTRUMENTS AVAILABLE FOR ONSTAGE ELECTRICS			
	6	ETC Source Four 50'	575
	36	ETC Source Four 36'	575
	36	ETC Source Four 26'	575
	30	ETC Source Four 19'	575
	8	Altman 6x12 ERS	1000
	40	Kliegl 8" Fresnel	1000
	10	Kliegl 6" Fresnel	750
	24	Altman PAR 64 Narrow Spot	1000
	42	Altman PAR 64 Medium Flood	1000
	18	Altman PAR 64 Wide Flood	1000
	16	Altman ACL's	28V-250
4th Electric	8	3 Cell Far Cyc Units	1000 / cell

Lighting control console: ETC Insight 2X in booth at rear of orchestra

Jackson Community College

Harold Sheffer Music Hall Sound Specification

Main Cluster (Stereo)

Each cluster is comprised of 3 cabinets, suspended stage right and stage left. Each Cabinet is loaded with 1-18" JBL 2241, 2-10" JBL 2123, 1-JBL 2447 1-1/2" Driver on a DDS 60 x 40 horn. The drivers are mechanically aligned in the enclosure. The 18" driver is front loaded, tuned to 35 Hz. The 10" drivers have a baffle/horn wave guide and are vertically arranged. The high frequency is located in the center to the box.

There also are two additional cabinets that are located at stage level, they are portable and can be used as front / near fill. There also are two sub cabinets at stage level loaded with 2-18" JBL2241. Each side is powered with a 2.0 HV Powerlight.

The system is powered by 4-QSC power light 4.0, and 2-QSC Powerlight 1.0HV power amps. They are located within 25' of the clusters. The system is controlled by a BSS FDS-388 omnidrive.

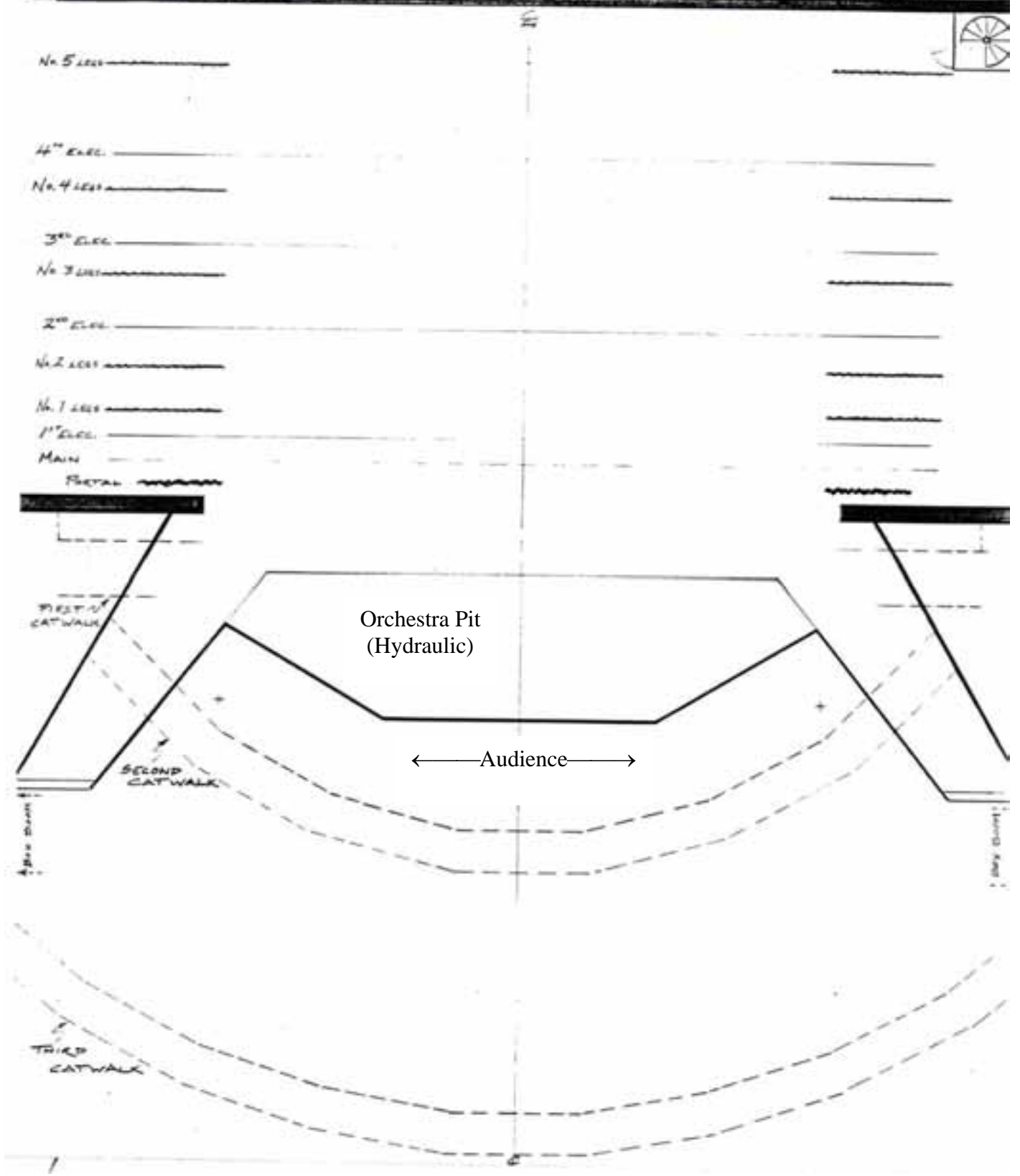
Center Cluster

This cluster consists of 4 Community SLS-918 cabinets flown two wide and two high. It is biamped, driven by two QSC Powerlight PLX-1202 amplifiers. It is controlled by a Community DSC-42 Digital Controller.

Delay Cluster

This cluster is stereo, controlled also by the BSS Omnidrive, powered by a Crown PS-400 stereo amp.

PLAN MUSIC HALL STAGE SCALE: $\frac{3}{32}'' = 1'-0''$



SYSTEM**House Curtain**

Operates as guillotine or traveller from SR deck

Rigging System

Type: Single purchase counter weight
 Weight: 10,000 lbs. available
 Line Sets: 34 sets at 7 in. o.c. with 7 lift lines/ set
 Arbors: 1,600 lb. capacity
 House Pipes: 72 ft. long with 67 ft. of travel from dock
 Line sets are not moveable
 Block & Falls available: 3:2 (1)

PERMANENT INSTALLATIONS

Over Stage (all dimensions are from smoke pocket)

Electric pipes (4) at 5'5", 15'4", 22'10", 31'1"
 Electric borders (4) at 1'1", 13'10", 21'1", 29'0"
 Orchestra Shells (2) at 6'4", 17'0" (18" wide)
 Movie Screen (1) at 8'11"

On Deck

Orchestra Shell stores on SL wall – 15'0" deep

Orchestra Pit

Adjustable to 8ft. below stage level by hydraulic lift
 Apron overhangs US wall of pit 5 ft. 0 in.

LOADING DOCK

Loading Door: 12 ft. 0 in. high x 12 ft. 0 in. wide
Trucks: (3) at same time, side by side
Loading Dock: Dock is at truck level; loading to stage

WARDROBE

Location: No designated area
Access: Not applicable
Facilities: (1) washer and (1) dryer

DRESSING ROOMS

Star Rooms(s): Bath and Shower included
 (2) DSR on stage level
Chorus Room(s): Bath and Shower included
 (5) USR on stage level

STORAGE AND REHEARSAL AREAS

Storage Space: None
Rehearsal Space: 43' x 38' located SR on stage level

ELECTRICS**Road Service Power**

Panel	Phase	Amp	Circuit Protection	Use	Location
A	3	400	fuse	dimmers	DSL side wall
B	3	200	fuse	sound	DSL side wall

Recommended location for dimmer racks is SL on deck

Front of House (box boom values are per side)

Position	Pipe Width	Distance to Prosc.	House Circuits	Connector Type	FOH Transfer Circuits
1 st Catwalk	56'	5'	16	grd 20 amp stage pin	16
2 nd Catwalk	48'	30'	16	grd 20 amp stage pin	16
3 rd Catwalk	90'	56'	16	grd 20 amp stage pin	16
Box Boom 1		54'	6	grd 20 amp stage pin	6

Transfer circuits grd 20 amp stage pin located on DSL side wall
 Underhung trees (1) at each end of 1st Catwalk will accommodate 6 Instruments per side; 2nd Catwalk is partially obstructed by ceiling.

Equipment – F.O.H.

Position	Quantity	Wattage	Instrument	Removable
1 st Catwalk	6	575	Source 4 19° w Iris	yes
1 st Catwalk	6	575	Source 4 26°	yes
3 rd Catwalk	28	575	Source 4 10°	no
3 rd Catwalk	16	750	Source 4 19°	no

Followspots

House Followspots: (3) Xenon Super Troupers; not removable
 Followspot Booths: (1) booth(s) with a maximum of (3) spot (s) per booth
 120 ft. throw to proscenium
 Booth Power: (3) single phase, 30 amp breakers
 Lightboard: ETC Insight 2X

SOUND**Console**

Soundcraft
 32 inputs
 8 subgroups

Speakers

Maincluster
 3 Cabinets
 Suspended stage right and stage left
 Center Cluster
 4 community
 Cabinets flown two wide, two high

Communications

Intercom System
 Clear-Com with 2 channel(s)
 Hearing-impaired system available
 Dressing room page system

Road Console

Located in rear of house
 No seats required to be removed
 Cable run from stage is 200 ft.
 Tie into house system with XLR

MUSIC HALL RIGGING SCHEDULE

#	US Dist.	Function	Curtain Size / Remarks
1	0'-0"	Asbestos Fire Curtain	
2	0'-9"	Main Teaser (Tulip Purple Velour)	11'H x 60'L
3	1'-4"	Portal (legs, color to match Teaser)	32'H x 12'W
4	1'-11"	General Purpose	
5	2'-6"	General Purpose	
6	3'-4"	Main Curtain (Tulip Purple Velour)	32'H x 74'L travel or guillotine
7	4'-3"	Border #1	11'H x 74'L (no fullness)
8	#1	S. L. side rail batten (runs up & down stg)	10'-6"L Double Batten
9	5'-5"	Electric #1 (w/54' plugging strip)	73'-6"L Double Batten
10	#1	S.R. side rail batten (runs up & down stg)	10'-6"L Double Batten
11		Orchestra Shell Ceiling	Winch controlled at SM Panel
12		Empty space	
13	7'-9 1/2"	split batten (such as Legs only)	
14	8'-3"	#1 Legs (on/off travel adjust)	35'H x 12'W Pivotal Track
15	8'-11"	Projection Screen (removable?)	16'H x 32'W
16	9'-6"	General Purpose	
17	10'-1 1/2"	General Purpose	
18	10'-8"	General Purpose	
19	11'-3"	Border #2	11'H x 74'L (no fullness)
20	11'-9 1/2"	General Purpose	
21	13'-3"	#2 Legs (on/off travel adjust)	35'H x 12'W Pivotal Track
22	13'-10"	General Purpose	
23	14'-3 1/2"	General Purpose	
24		Empty Space	
25	#2	S.L. side rail batten (runs up & down stg)	10'-6"L Double Batten
26	15'-4"	Electric #2 (w/54' plugging strip)	73'-6"L Double Batten
27	#2	S.R. side rail batten (runs up & down stg)	10'-6"L Double Batten
28		Empty Space	
29		Orchestra Shell Ceiling	Elec Winch at S.M. Panel
30	18'-1 1/2"	Split Batten (such as Legs only)	
31		Empty Space	
32	18'-11"	Border #3	14'H x 74'L (no fullness)
33	19'-6"	General Purpose	
34	20'-0"	#3 Legs (on/off travel adjust)	35'H x 12'W Pivotal Track
35	20'-7 1/2"	General Purpose	
36	21'-1"	General Purpose	
37	21'-9"	General Purpose	
38		Empty Space	
39	22'-10 1/2"	Electric #3 (w/54' plugging strip)	73'-6"L Double Batten
40	24'-4"	General Purpose	
41	24'-11"	General Purpose	
42	25'-5"	General purpose	
43	26'-1/2"	Border #4	14'H x 74'L (no fullness)
44	26'-7 1/2"	General Purpose	
45	27'-3"	Intermediate Drap (Full Stg Black)	32'H x 76' (Traveler Track)
46	27'-10"	#4 Legs (on/off travel adjust)	35'H x 12'W Pivotal Track
47	28'-5"	General Purpose	
48	29'-0"	General Purpose	
49	29'-7"	Striplight (4 color)	Ions of 8' strips w/plugging
50		Empty Space	

51	#3	S.L. side rail batten (runs up & down stg)	10'-6"L Double Batten
52		Empty Space	
53	31'-1"	Electric #4 (w/54' plugging strip)	73'-6"l Double Batten
54	#3	S.R. side rail batten (runs up & down stg)	10'-6"L Double Batten
55	32'-3 1/2"	General Purpose	
56	32'-9"	General Purpose (Black Scrim Storage)	36'H x 68'W
57	33'-5"	General Purpose	
58	33'-11"	General Purpose	
59	34'-6"	General Purpose	
60	35'-2"	(8) Sets of 3 Cell Far Cyc Units	
61	35'-9 1/2"	General Purpose (White Scrim Storage)	36'H x 68'W
62	36'-4 1/2"	General Purpose	
63	36'-11"	White Cyclorama	36'H x 68'W
64	37'-5 1/2"	General Purpose	
65	38'-1"	General Purpose	
66	38'-8"	General Purpose	
67	39'-2 1/2"	#5 Legs (on/off travel adjust)	35'H x 12'W Pivotal Track
68	39'-10"	General Purpose	
69	40'-5 1/2"	General Purpose	
70	41'-11"	General Purpose	
71	42'-5"	General Purpose	
72	43'-0"	General Purpose	
73	43'-7"	General Purpose	
	44'-4"	Back wall of Stage	

NOTE: Line sets in Bold can NOT be changed, moved, OR
require permission and advance notice to be changed.
All distances are from the Fire Pocket on the US side of the Proscenium.

VENUE INFORMATION

Nearby Hospitals and Emergency Treatment Centers:

Foote Hospital
205 N. East Avenue
Jackson, MI 49201
(517) 788-4800

Foote Hospital Walk-In Center
205 N. East Avenue
Jackson, MI 49201
(517) 788-4909

Recommended Hotels:

Holiday Inn of Jackson
2000 Holiday Inn Drive
Jackson, MI 49202
(517) 783-2681
Prices: \$50 Double inside room
\$60 Queen/King inside
\$55 Double holidome side
\$70 Queen/King holidome side

NOTES: Use of fitness center next to hotel. Full service restaurant. Indoor Pool/ Hot Tub. Holidome.

Hampton Inn
2225 Shirley Drive
Jackson, MI 49202
(517) 789-5151
Prices: \$74 Flat rate weekdays
\$84 One-person weekend
\$89 Two-person weekend
Suites are \$10 more

NOTES: Suites available. Refrigerator, microwave oven and desk. No room service available, but located next to Gilberts Steakhouse.

Comfort Inn & Suites
2435 Shirley Drive
Jackson, MI 49202
(517) 768-0088
Prices: \$79.95 Queen Single Weekday
\$84.95 Queen Double Weekday
\$84.95 King Single Weekday
\$89.95 King Double Weekday
\$89.95 Suite Weekday
\$89.95 Queen/King Single Weekend
\$94.95 Queen/King Double Weekend
\$94.95 Suite Weekend
\$179.95 Jacuzzi Suite Weekday
\$199.95 Jacuzzi Suite Weekend

NOTES: Continental Breakfast, Indoor pool and Whirlpool. Fitness Center. Each room has refrigerator & microwave. Laundry facility.

Fairfield Inn
2395 Shirley Drive
Jackson, MI 49202
(517) 784-7877
Prices: \$68.95 Single Weekday
\$73.95 Double Weekday
\$76.95 Single/Double
Weekend Rate

NOTES: Free Continental Breakfast. Indoor Pool/Hot Tub. Gameroom. Vending machines. One-room suites.

Country Hearth Inn
1111 Boardman
Jackson, MI 49202
(517) 783-6404
Prices: \$63 single
\$68 double
NOTES: Full Breakfast available. Each room has coffeemaker, recliner and desk. Located in parking lot of large Shopping Center.

Local Restaurants:

Whirligig Restaurant and Lounge

(at the Holiday Inn of Jackson)
2000 Holiday Inn Drive
Jackson, MI
Fine Dining
(517) 783-0693

Ground Round

Jackson Crossing
Jackson, MI
Family Restaurant
(517) 782-3330

Gilberts Steak House

2323 Shirley Drive
Jackson, MI
Fine Dining
(517) 782-7135

Various Fast Food Chains

(Burger King, McDonalds, etc.)
located along West Avenue
in Jackson

Taxi Services:

City Cab

(517) 841-9630

Colonial Cab

(517) 782-7700

Local Drug Store:

Rite Aid Pharmacy
(located near Holiday Inn of Jackson)
1089 N. Wisner Street
Jackson, MI
(517) 782-0574